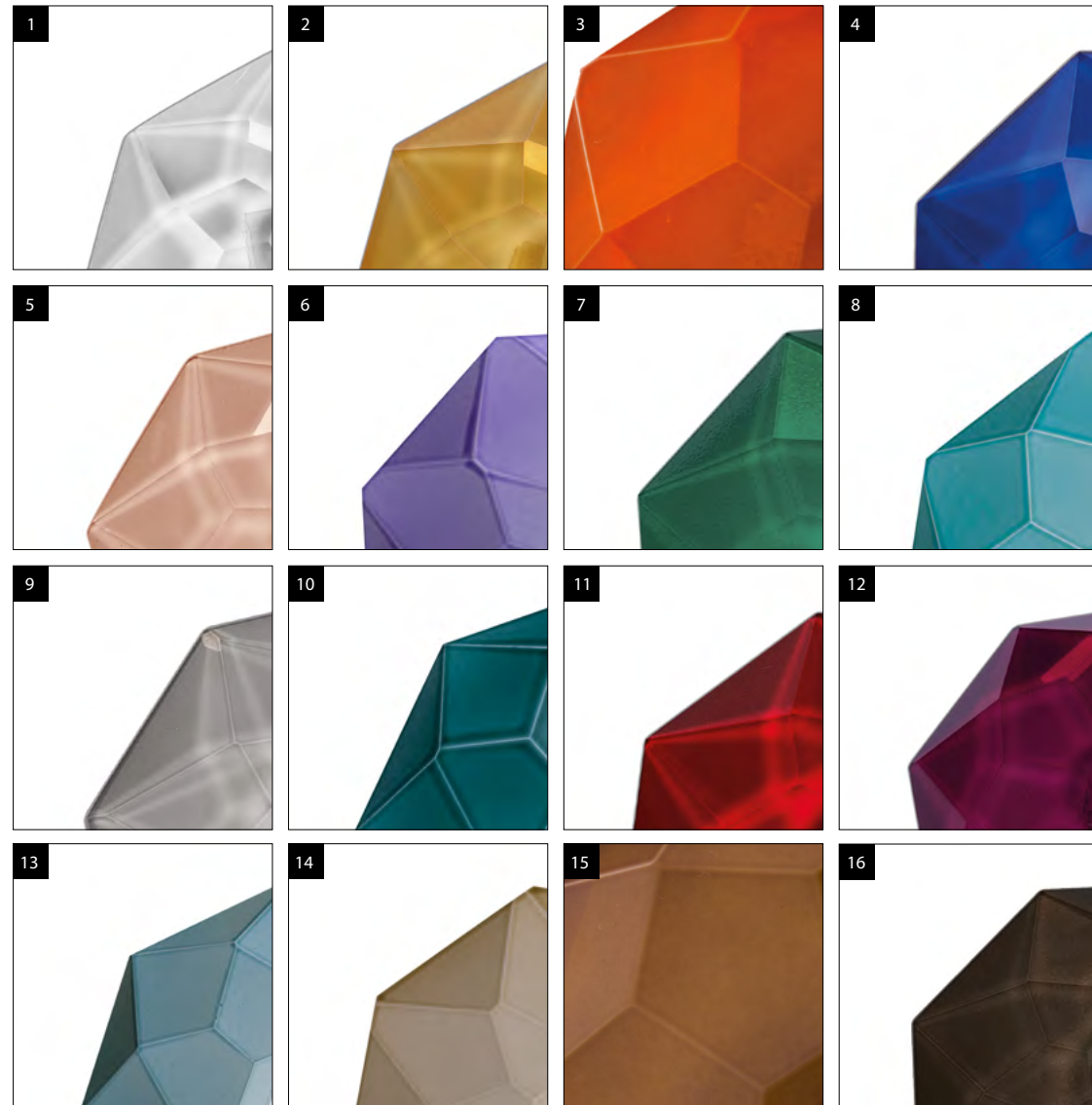
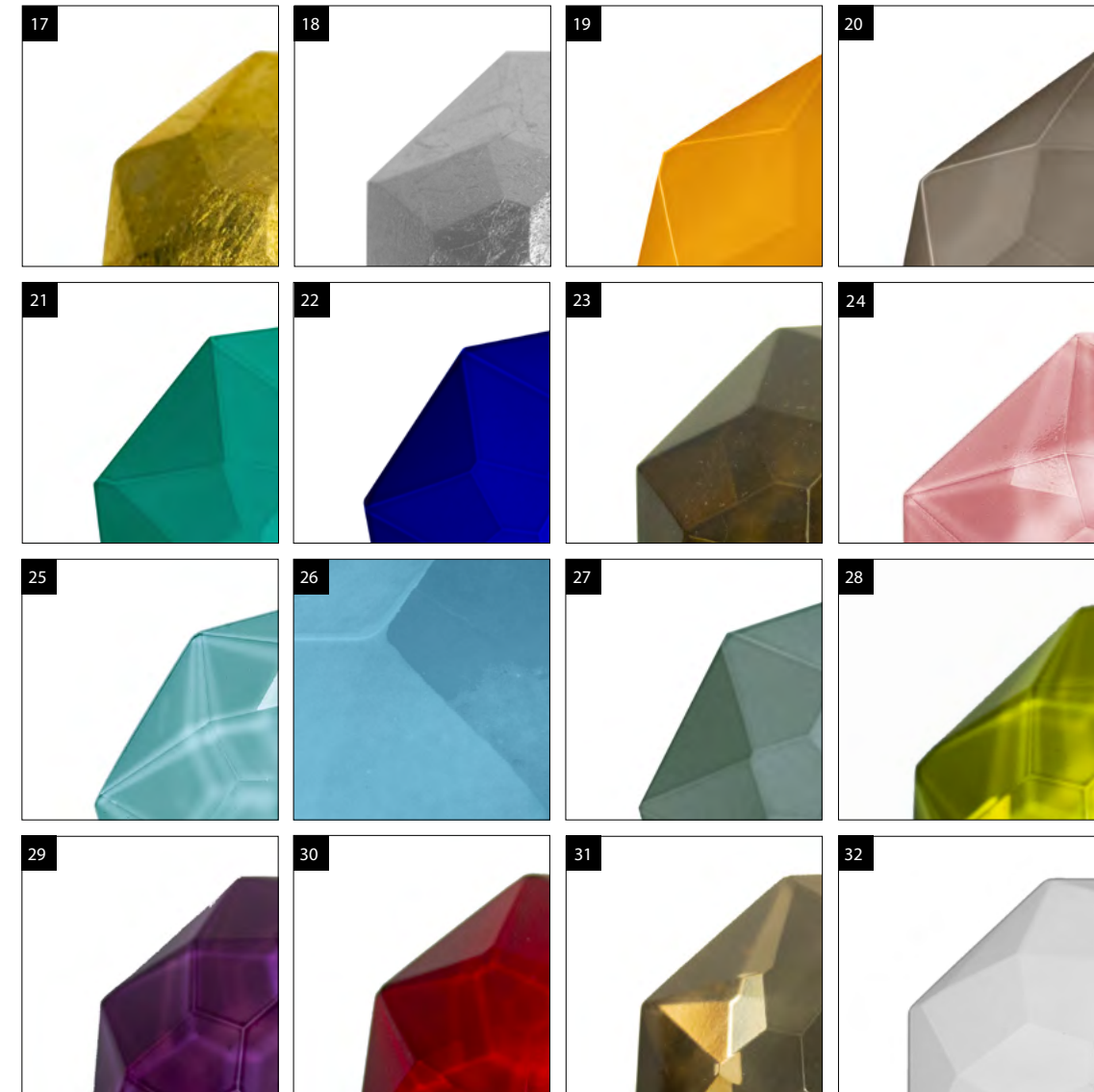


euroluce / finiture vetri / glass finishes



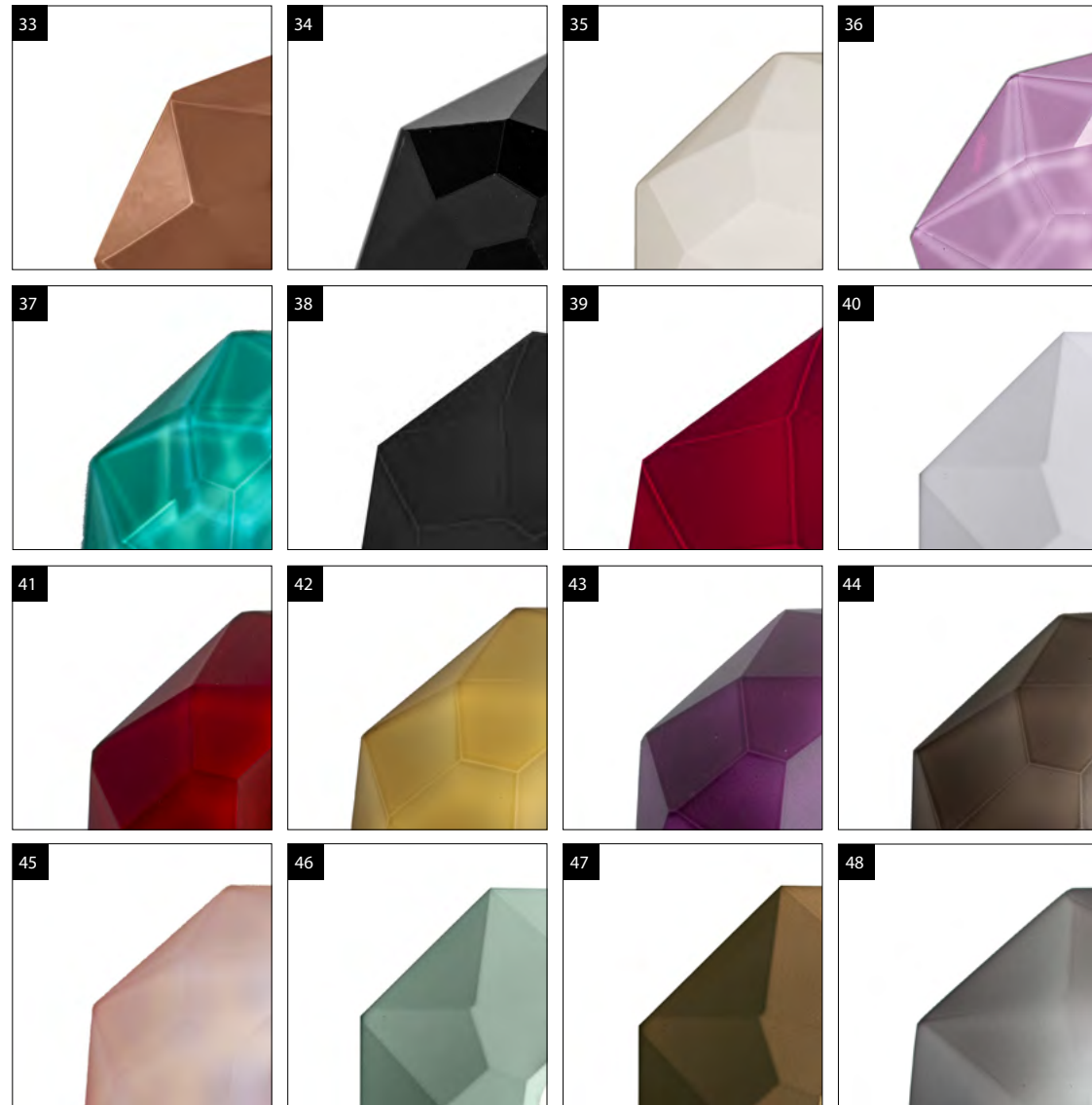
- 1. trasparente / transparent
- 2. ambra / amber
- 3. topazio / topaz
- 4. blu cobalto / cobalt blue
- 5. rosaline
- 6. violet / violet
- 7. verde smeraldo / emerald
- 8. turchese / turquoise
- 9. fumè / fumè
- 10. verde diamante / green diamond
- 11. rubino / ruby
- 12. ametista / amethyst
- 13. ottanio / teal blue
- 14. tabacco / tobacco
- 15. marrone / brown
- 16. fumè scuro / dark fumè

euroluce / finiture vetri / glass finishes



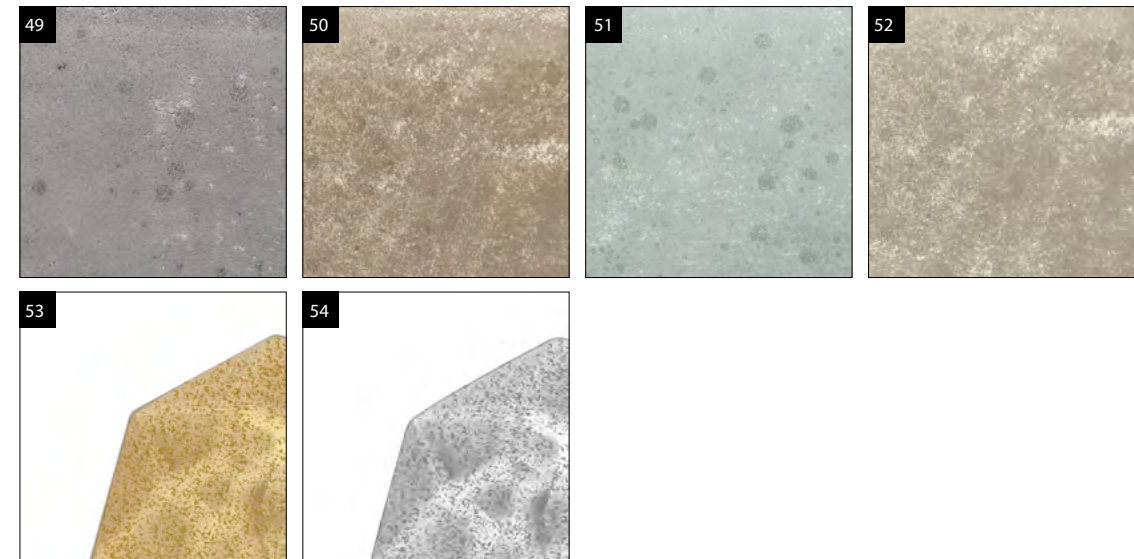
- 17. foglia oro / gold leaf
- 18. foglia argento / silver leaf
- 19. ambra yncanto / amber yncanto
- 20. fumè yncanto / fumè yncanto
- 21. verde yncanto / green yncanto
- 22. blu notte / midnight blue
- 23. fumè bronze
- 24. rosaline hanami
- 25. azzurro tiffany / blue tiffany
- 26. acquamarina / aquamarine
- 27. viridian
- 28. verde senape / mustard green
- 29. fucsia / fuchsia
- 30. rosso / red
- 31. fumè bronze specchiato / mirror
- 32. bianco / white

euroluce / finiture vetri / glass finishes



33. marrone lucido / polished brown
 34. nero / black
 35. bianco perla / pearl white
 36. glicine / wisteria
 37. verde greenery / greenery green
 38. nero matt / matt black
 39. rosso matt / matt red
 40. trasparente satinato / satin transparent
 41. rubino satinato / satin ruby
 42. ambra satinato / satin amber
 43. ametista satinato / satin amethyst
 44. bronze satinato / satin bronze
 45. rosaline satinato / satin rosaline
 46. viridian satinato / satin viridian
 47. marrone satinato / satin brown
 48. fumè satinato / satin fumè

euroluce / finiture vetri / glass finishes



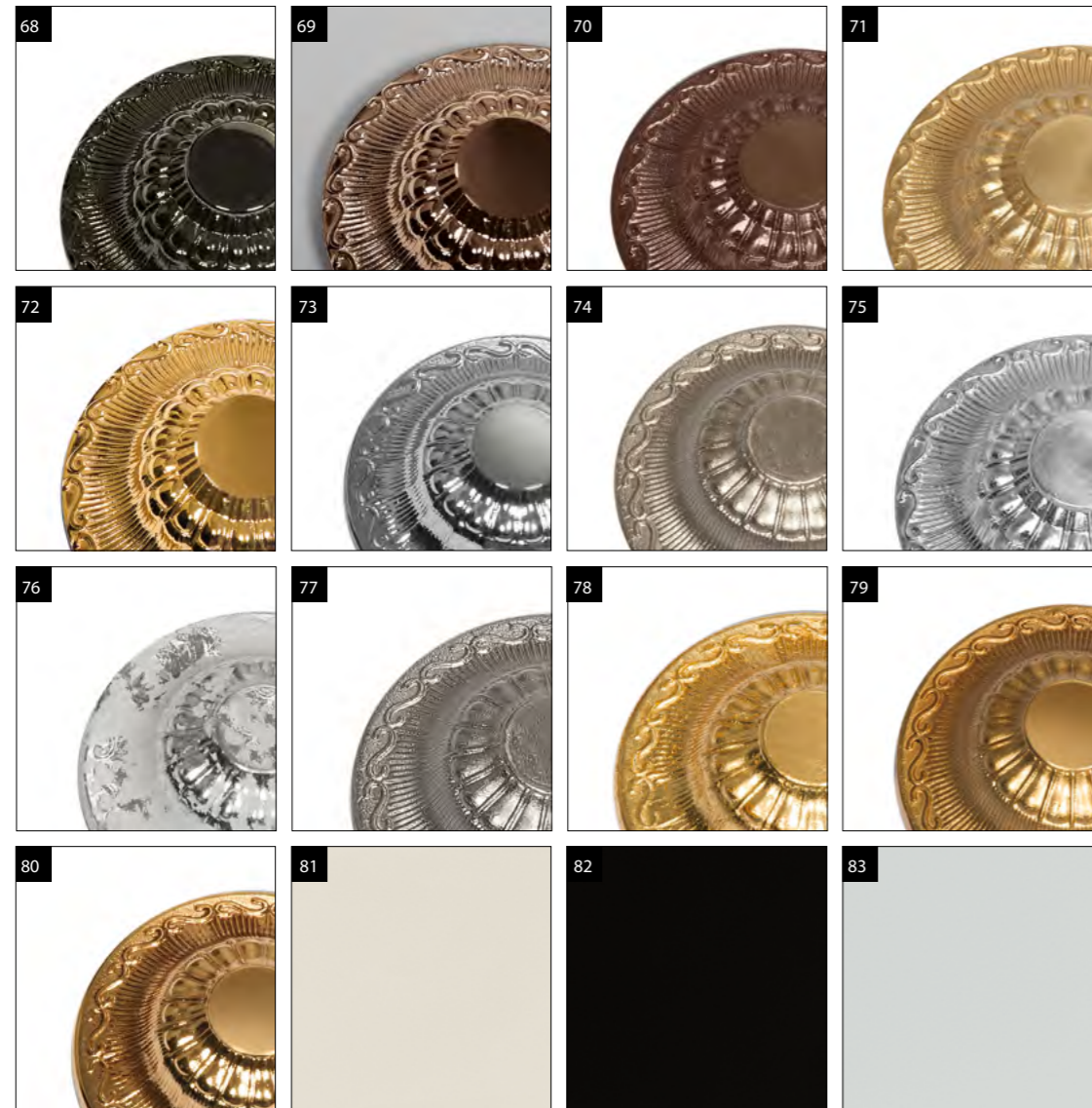
49. fumè vintage / vintage fumè
 50. tabacco vintage / vintage tobacco
 51. viridian vintage / vintage viridian
 52. vintage
 53. sheen / sheen
 54. sheen argento / silver sheen

euroluce / cristalli swarovski / swarovski crystals



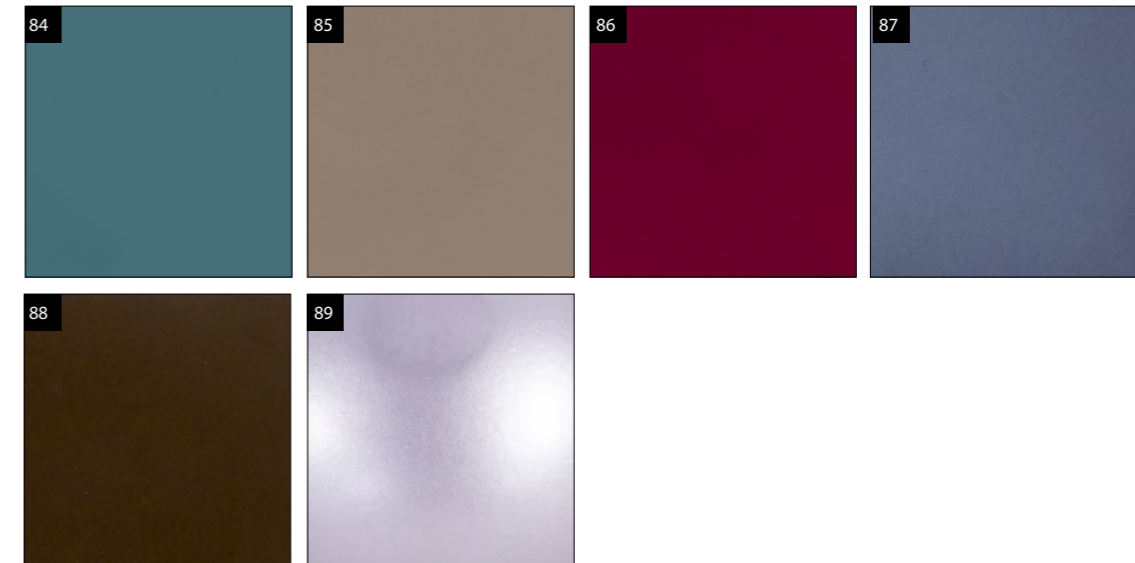
- 55. ambra
- 56. antic green
- 57. blue violet
- 58. bronze shade
- 59. crystal transparent
- 60. emerald
- 61. ametista
- 62. cobalt blue
- 63. nero jet
- 64. rosaline
- 65. rubino
- 66. silver night
- 67. violet

euroluce / finiture metalli / metal finishes



- 68. nichel nero / black nichel
- 69. marrone stagno finitura lucida / tin brown with gloss finish
- 70. marrone stagno finitura opaca / tin brown with gloss finish
- 71. oro 24K satinato / satin gold 24K
- 72. oro 24K lucido / shiny gold 24K
- 73. cromo lucido / shiny chrome
- 74. argento satinato / satin silver
- 75. cromo satinato / satin chrome
- 76. foglia argento + biancospino / silver leaf whiteorn
- 77. foglia argento / silver leaf
- 78. foglia oro / gold leaf
- 79. oro satinato francese / french satin gold
- 80. oro lucido francese / french gold
- 81. RAL 1013 avorio / ivory
- 82. RAL 9005 nero opaco / opaque black
- 83. RAL 7035 bianco ghiaccio / ice white

euroluce / finiture metalli / metal finishes



- 84. RAL 5021 ottanio / teal blue
- 85. RAL 7006 tortora / dove gray
- 86. RAL 4004 viola bordeaux / purple bordeaux
- 87. laccato grigio / gray lacquered
- 88. RAL brown senegal
- 89. RAL metallic lilac

euroluce / paralumi lampadari / lampshades chandeliers



TC 70/35 - ø16 h11
Mod. Cilindro: pelle python bianco.
Mod. Cylinder: white python leather.



TC 26/42_A - ø14 h10
Mod. Cilindro: pvc e organza nero.
Mod. Cylinder: black in pvc and organza.



TC 26/42_B - ø14 h10
Mod. Cilindro: pvc e organza bianco.
Mod. Cylinder: white in pvc and organza.



TC 70/12 - ø25 h16
Mod. Cilindro: tessuto cinzato e pvc con passamaneria plattina cromo o oro.
Mod. Cylinder: shade in chintz fabric and pvc with chrome or gold border as trimming.



TC 34/51 - ø14 h14
Mod. Cono Alto: lebok bordeaux stoppicciato a mano, pvc oro satinato.
Mod. High Cone: creased bordeaux lebok, satin gold pvc.



TC 34/50 - ø14 h14
Mod. Cono Alto: tessuto monaco verde stropicciato a mano.
Mod. High Cone: creased green monaco fabric.



TC 34/16_A - ø13 h13
Mod. Cono Alto: velluto avorio e passamaneria avorio.
Mod. High Cone: ivory velvet/ ivory trimming.



TC 34/16_B - ø13 h13
Mod. Cono Alto: velluto grigio e passamaneria nera.
Mod. High Cone: grey velvet and black trimmings.



TC 34/16_C - ø13 h13
Mod. Cono Alto: velluto bordeaux e passamaneria nera.
Mod. High Cone: bordeaux velvet and black trimmings.



TC 34/52 - ø13 h13
Mod. Cono Alto: tessuto monaco/ pvc argento satinato.
Mod. High Cone: monaco fabric/ satin silver pvc.



TC 34/48 - ø16 h14
Mod. Ottagono sagomato: bordeaux in plissé velo, fodera pongè, passamaneria velluto.
Mod. Octagonal shade: bordeaux in voile and pongè, velvet ribbon as trimming.



TC 33/87 - ø16 h11
Mod. Impero: velo e organza, passamaneria in velluto bordeaux.
Mod. Impero: organza and voile, velvet bordeaux ribbon as trimming.



TC 30/20 - ø16 h14
Mod. Impero: maglina diamantata/ damasco.
Mod. Impero: jersey/damasco.



TC 30/85_A - ø13 h11
Mod. Impero: maglina e pongè.
Mod. Impero: jersey and pongè.



TC 30/85_B - ø13 h11
Mod. Impero: maglina e pongè.
Mod. Impero: jersey and pongè.



TC 30/86 - ø13 h11
Mod. Impero: velo e pongè, passamaneria nastro in velluto.
Mod. Impero: pongè and voile, velvet ribbon as trimming.



TC 30/68 - ø16 h12
Mod. Impero: fasciato pongè.
Mod. Impero: pleated pongè.



CL 70/17 - ø15 h11
Mod. Cilindro: Lackfoile in tessuto cinzato e pvc con decorazione forata.
Mod. Cylinder: shade Lackfoile in chintz fabric and pvc with decoration.



VT 40/21 - ø16 h15
Mod. Ventola: maglina e pongè plissé.
Mod. Ventola: jersey and pleated pongè fabric.



TC 31/43_A - ø13 h11
Mod. Impero: organza bianca.
Mod. Impero: white organza.

euroluce / paralumi lampadari / lampshades chandeliers



TC 31/43_B - ø13 h11
Mod. Impero: organza champagne.
Mod. Impero: champagne organza.



TC 31/43_C - ø13 h11
Mod. Impero: organza glicine.
Mod. Impero: wisteria organza.



TC 31/43_D - ø13 h11
Mod. Impero: organza nera.
Mod. Impero: black organza.



TC 31/43_E - ø13 h11
Mod. Impero: organza oro.
Mod. Impero: gold organza.



TC 31/11 - ø16 h12
Mod. Impero: velo e pongè.
Mod. Impero: pongè and voile.



TC 31/12 - ø16 h12
Mod. Impero: fodera pongè e pongè plissé.
Mod. Impero: shade with pongè fabric and pleated pongè.



TC 33/11 - ø14 h12
Mod. Gatto Quadro: organza, tessuto pongè, velo e passamaneria in velluto.
Mod. Gatto Quadro: organza, pongè fabric, voile and velvet trimming.



TC 33/12 - ø14 h12
Mod. Gatto Quadro: organza, tessuto pongè e "Lombardia", passamaneria in velluto.
Mod. Gatto Quadro: organza, pongè fabric, "Lombardia" pattern and velvet trimming.



TC 30/87 - ø13 h11
Mod. Impero: pongè e velo con passamaneria nastro in velluto.
Mod. Impero: pongè fabric and voile and with velvet ribbon as trimming.



TC 34/00_A - ø13 h11
Mod. Impero: organza giallo oro, velo avorio e fettuccia.
Mod. Impero: gold yellow organza, ivory voile and ribbon as trimming.



TC 34/00_B - ø13 h11
Mod. Impero: organza avorio, velo avorio e fettuccia.
Mod. Impero: ivory organza, ivory voile and ribbon as trimming.